

USYS 20



**Economic Processor for Diameter or Capacitance
Measurement, Data Acquisition, Processing, Display & Control**

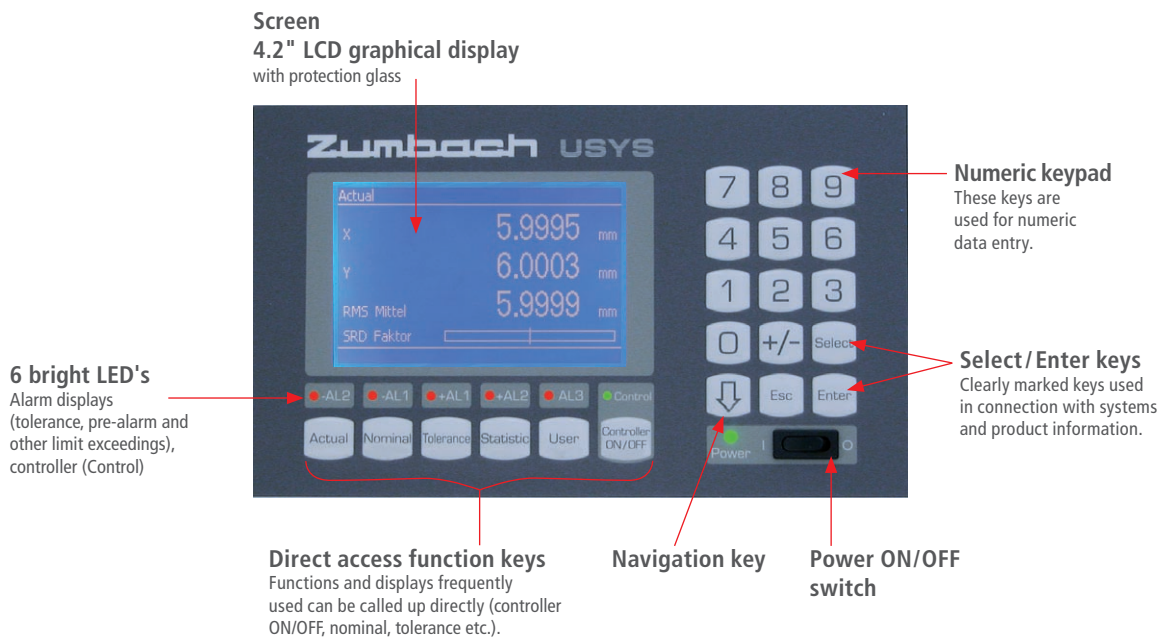
USYS 20 – Hi-Tech, Industrial Data Acquisition System with a Human Touch

The system features real-time, multi-tasking data processing and control. USYS 20 accepts measurements from a broad line of ZUMBACH gauges covering a diameter or width range from 0.012 mm (0.00047 in.) to 310 mm (12.2 in.) with a selectable resolution of up to 0.00001 mm (0.0000004 in.).

- Complete system for one measuring point
- Simultaneous display of 3 measured values
- Industrial, rugged design
- High-contrast LCD monochrome screen (240 x 128 pixels)
- Alarm displays
- Real-time data collection
- Reel and session reports
- DDC – Direct Dynamic Control system
- SRD – Static Regulating Device

User friendly control panel with easy menu navigation

Heavy duty industrial grade front panel. Membrane covered mechanical switches feature tactile and audio feedback.



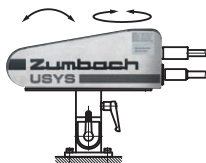
Flexible Mounting Possibilities

Table top use

Standard



By means of the fixation set no. USY.0002.930



Wall mounting

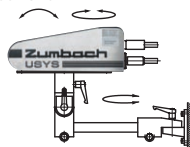
Using the fastening rails included in the delivery.



By means of the rotary holder no. USY.0002.910.

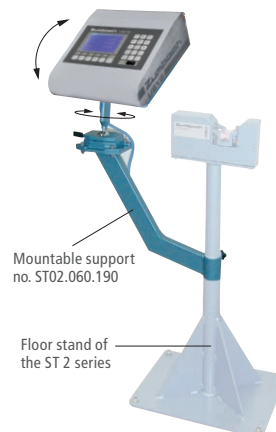


By means of the fixation set, no. USY.0002.920.



Mounting onto a floor stand ST 2

Thanks to a mountable support the USYS 20 table top unit can easily be added onto a floor stand of the ST 2 series.



19" rack mounting



This 19" drawer allows the mounting of 1 or 2 USYS 20.

Note:
A suitable housing is optionally available (no. A32 100 0330).



Rear Panel Inputs, Outputs and Peripherals (Options)

Measuring head connector

One unit from the wide range of digital 1, 2 or 3 axis ODAC® diameter measuring heads can be connected. Instead of the diameter measuring head, it is also possible to connect a capacitance measuring system of the CAPAC® J series.



Port 1 Serial interface

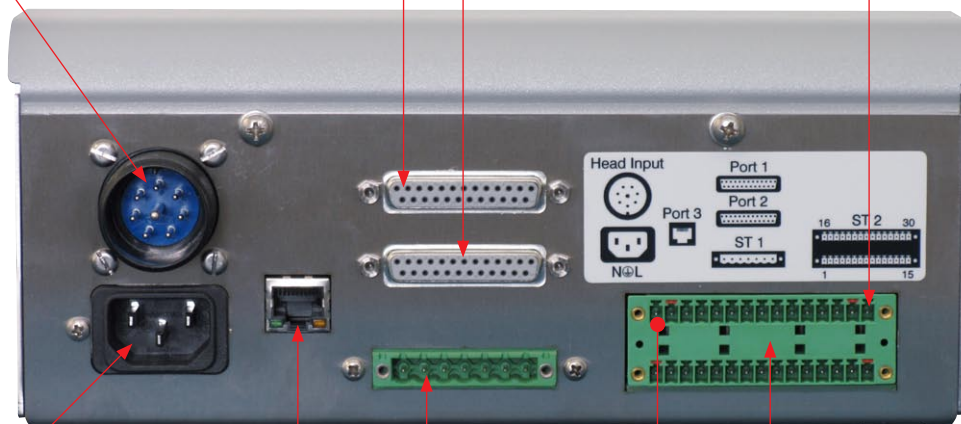
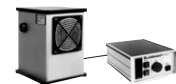
Can be configured for the connection with a printer (Continuous or label printer) or a remote display.

Port 2 Serial interface

For the communication with a higher level host computer or the connection with USYS Data Log from Zumbach or a remote display



MV3-RK Motorized vacuum controller



Mains connector/fuse

Integrated connector with built-in fuse and mains filter.

Port 3 Ethernet interface

With TCP/IP protocol for the integration of the USYS 20 into a local network (LAN). Communication with a higher level host computer or linked with USYS Data Log from Zumbach.

Relay output

Offers 3 configurable relay outputs (e.g. system alarm, tolerance alarm). It also enables the connection of an external control pulse for the automatic control of the equipment (e.g. vacuum controller).

I/O connector

Following inputs/outputs are available:
- 4 digital inputs (e.g. statistics, start/stop, pause)
- 5 digital outputs (tolerance alarms, pre-alarms)
- 1 counter input (e.g. for the line speed)
- 1 analog output +/- 10 V

The connections can be extended, by means of the optional Static Regulating Device, with 2 additional digital inputs and 1 static regulating device (analog input and output).

"SRD" Static Regulating Device

Control of line speed/ extruder screw r.p.m.



Line speed/footage counter input

Proximity detector or WG 2 or TI 069



MPK1-10T / PS 11130-A

Motorized potentiometer with servo valve for control of internal air support pressure



Event input

Lumps, neckdowns, spark failures, reel change etc.

Data collection

Start/stop and pause input

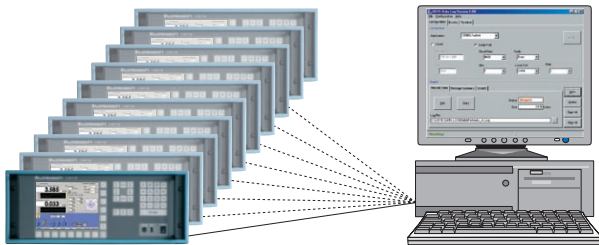
Chart recorder (analog)



USYS Data Log

The USYS Data Log is a Windows™ based software, offering an easy way to configure specific data acquisition (logging and archiving) from ZUMBACH processors onto customer PCs.

The measurement data can be collected from a single instrument or from several ZUMBACH processors and

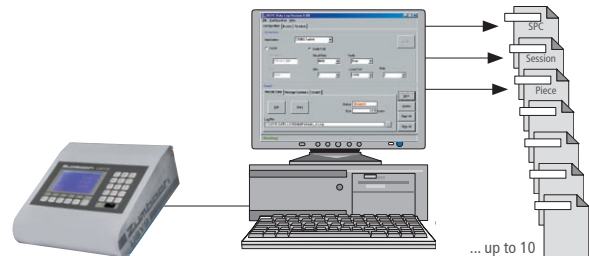


Multiple Collection

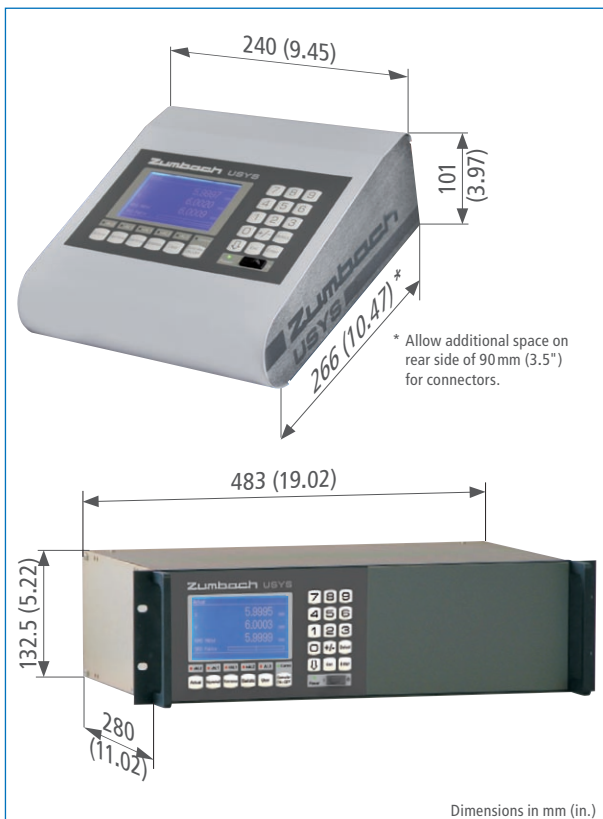
Several USYS Data Log programs can run on the same PC, i.e. it is possible to collect the information of all Zumbach processors in the factory to only one single computer.

saved in a text file format or in Excel™. USYS Data Log communicates with the processors through a serial interface or an Ethernet TCP/IP connection.

™ Windows and Excel are trademarks of Microsoft Corporation



Dimensions



Main Specifications

Electrical power supply

| | |
|------------------|----------------|
| Mains voltage: | 115 V / 230 V~ |
| Tolerance: | -10...+6 % |
| Mains frequency: | 48...62 Hz |
| Power: | max. 200 VA |

Temperature range

| | |
|--------------------|---------------------------|
| Operating: | 0...50°C (32 ... 120°F) |
| Transport/storage: | -20...70°C (-4 ... 140°F) |

| | |
|-------------------|-------|
| Protection | IP 51 |
|-------------------|-------|

Weight

| | |
|--------------------|-------------------|
| Table top version: | 3.4 kg (7.5 lbs.) |
| 19" rack version: | 11.5 kg (25 lbs.) |

CE USYS 20 meets the current CE standards regarding overall performance and EMC (Electro Magnetic Compatibility).

• Specifications are subject to change without notice



Switzerland (H.Q.)
ZUMBACH Electronic AG
P.O. Box
CH-2552 Orpund
Phone +41 (0)32 356 04 00
Fax +41 (0)32 356 04 30
E-mail: sales@zumbach.ch

USA
ZUMBACH Electronics Corp.
140 Kisco Avenue
Mount Kisco, NY 10549-1407
Phone +1 914 241 7080
Fax +1 914 241 7096
E-mail: sales@zumbach.com

Other ZUMBACH companies in Argentina, Belgium, Brazil, China, France, Germany, India, Italy, Spain, Taiwan and UK, plus agents and service in more than 40 countries.

www.zumbach.com